

Fifth Avenue's Most Private Address

Seven
Twelve
Fifth
Avenue

Uncover
a New
Era of
Midtown
Mastery

Fifth Avenue's Most Private Address.

Rediscover a Plaza District Classic.

Powerful and grandly intimate, the timeless building at 712 5th Avenue is a monument to ambition with quintessential Central Park views. Each boutique floorplate of this premium commercial offering comprises approximately 9,800 RSF for Tower and Mid-Rise Floors (Floors 17-52) and 13,000 RSF for Base Floors (Floors 6-14) with partial to full floors available. Original architects Kohn Pederson Fox recently completed stunning upgrades and a bold lobby renovation, inspiring a new era of excellence in the Plaza District.

A Pillar of Midtown Prestige.

An Iconic Address

Enjoy the luxury of true focus, elevated above New York City's most iconic avenue. Private, prestigious and undeniably premium; every moment here raises the everyday into the extraordinary.





The Business of Bold Perspectives.

Be Untouchable

Surrounded on all sides by New York City's most iconic buildings and imbued with the energy of the streets below, every workspace provides undeniable presence and understated style.

Where Purpose Meets Point of View.

Seize a New Perspective

Here, presiding over Midtown, an address to truly impress. Endless city views meet moments of reflection, celebration and determination, while a coveted Central Park backdrop inspires what's next.





A Grand Arrival for Grander Pursuits.

A Fifth Avenue Transformation

The lobby is evolved for a new generation by original architects Kohn Pedersen Fox, featuring a curved acrylic entrance and marble reception.

All units are available immediately unless dated below.

46		9,866 RSF
45	3,160 RSF	4,315 RSF 2,306 RSF
42		9,777 RSF
41		6,515 RSF
38		2,702 RSF
24		9,734 RSF
21		6,545 RSF
20		9,697 RSF
17		2,959 RSF
14		12,930 RSF
11	Available 3/1/26	9,535 RSF
10		12,930 RSF
8	Available 5/1/26	12,930 RSF

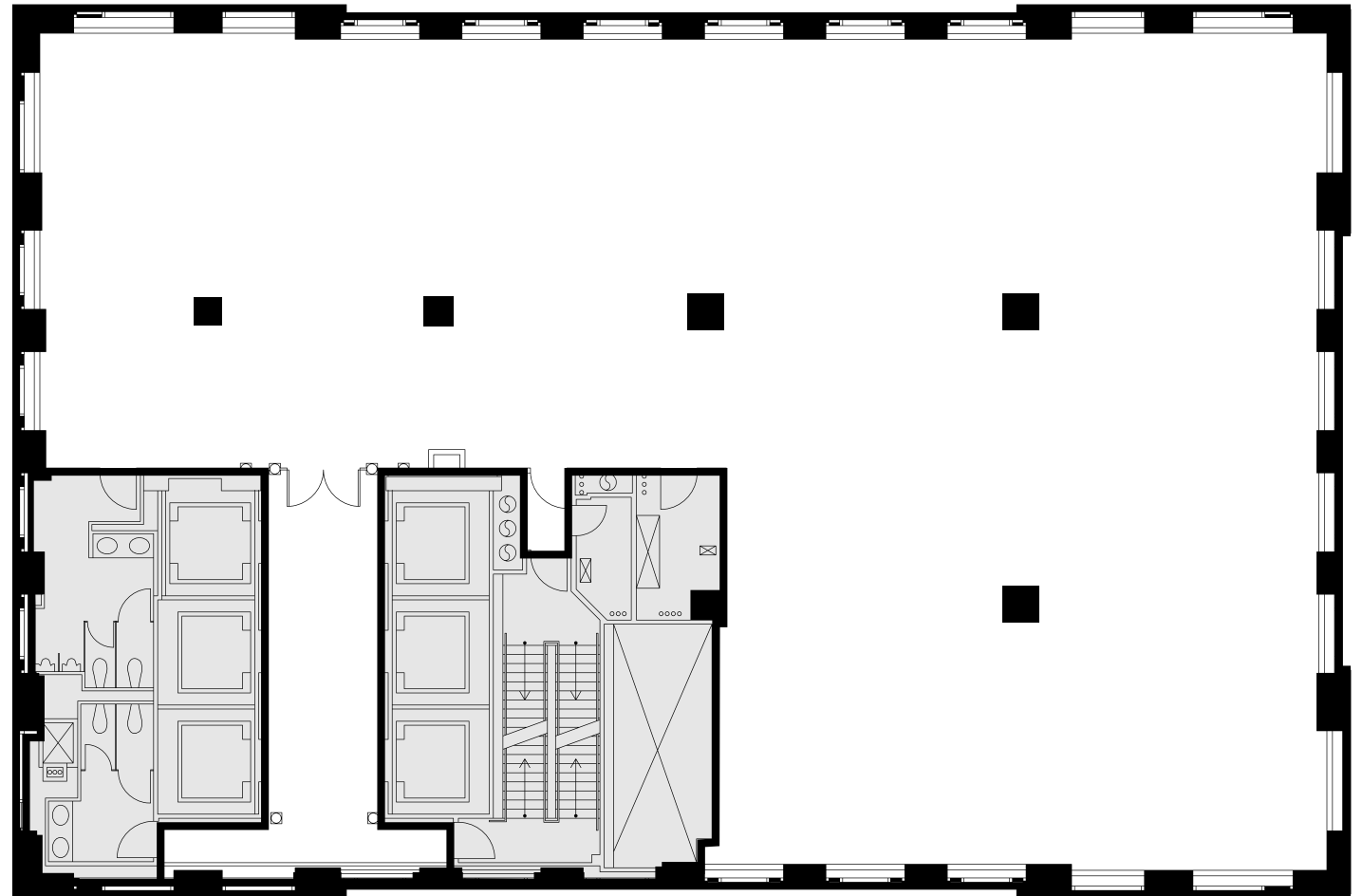
The Space for Success.

Approximately 9,800 RSF per Tower and Mid-Rise Floor (Floors 17-52)

Set serenely high above 5th Avenue, the newly renovated workspaces of 712 5th Avenue offer complete customization—with partial to full floors available for lease, grand windows and six high-speed elevators. The building itself is certified LEED Gold, with a striking lobby renovation completed by original architects Kohn Pedersen Fox. Just beyond the lobby's uniquely curved acrylic entrance, music played on a distinctive Poul Henningsen designed piano invites tenants and guests daily.

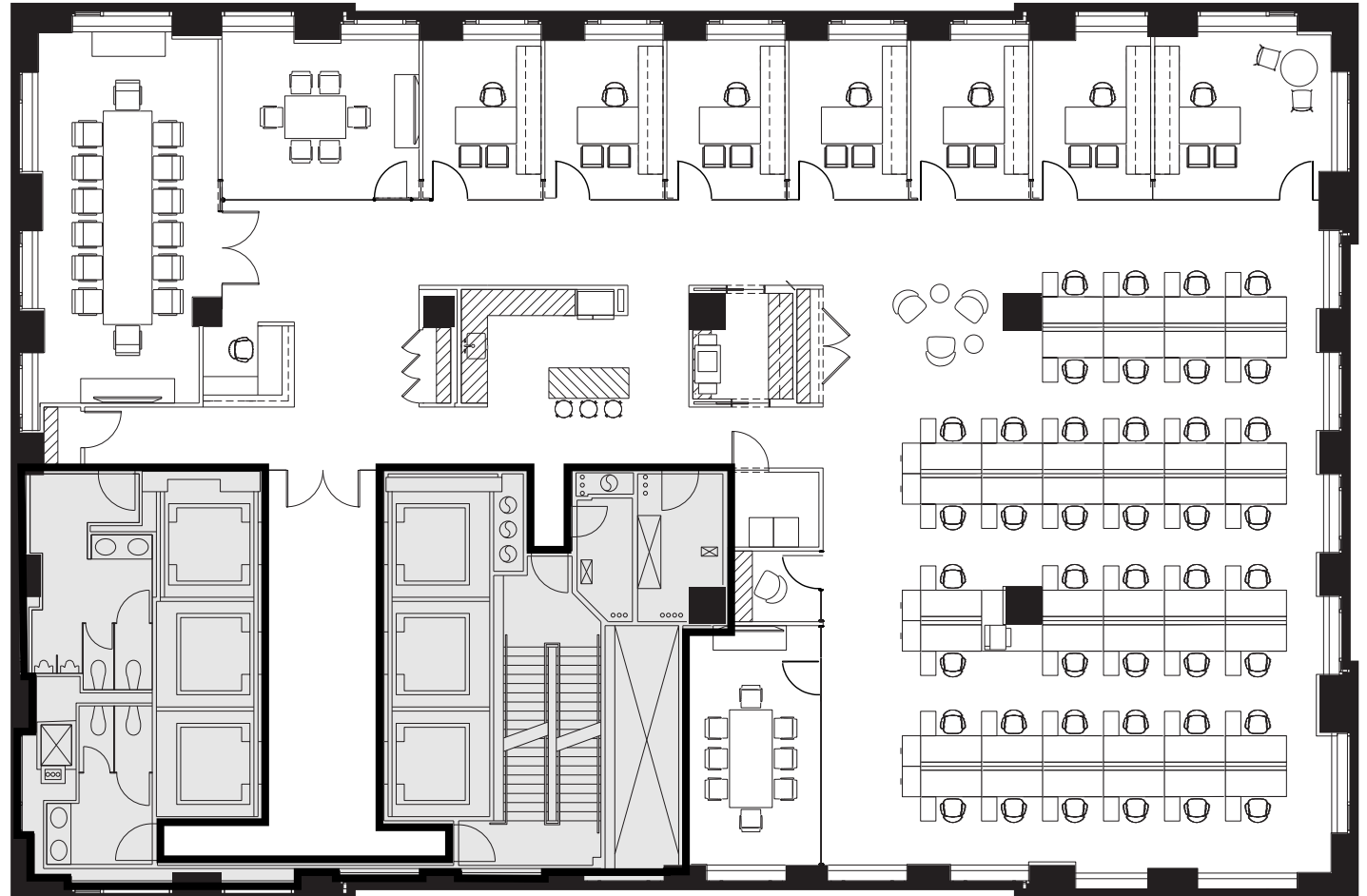
Representative
Full Floor

Tower Core Plan



+/-9,800 RSF

Representative
Full Floor



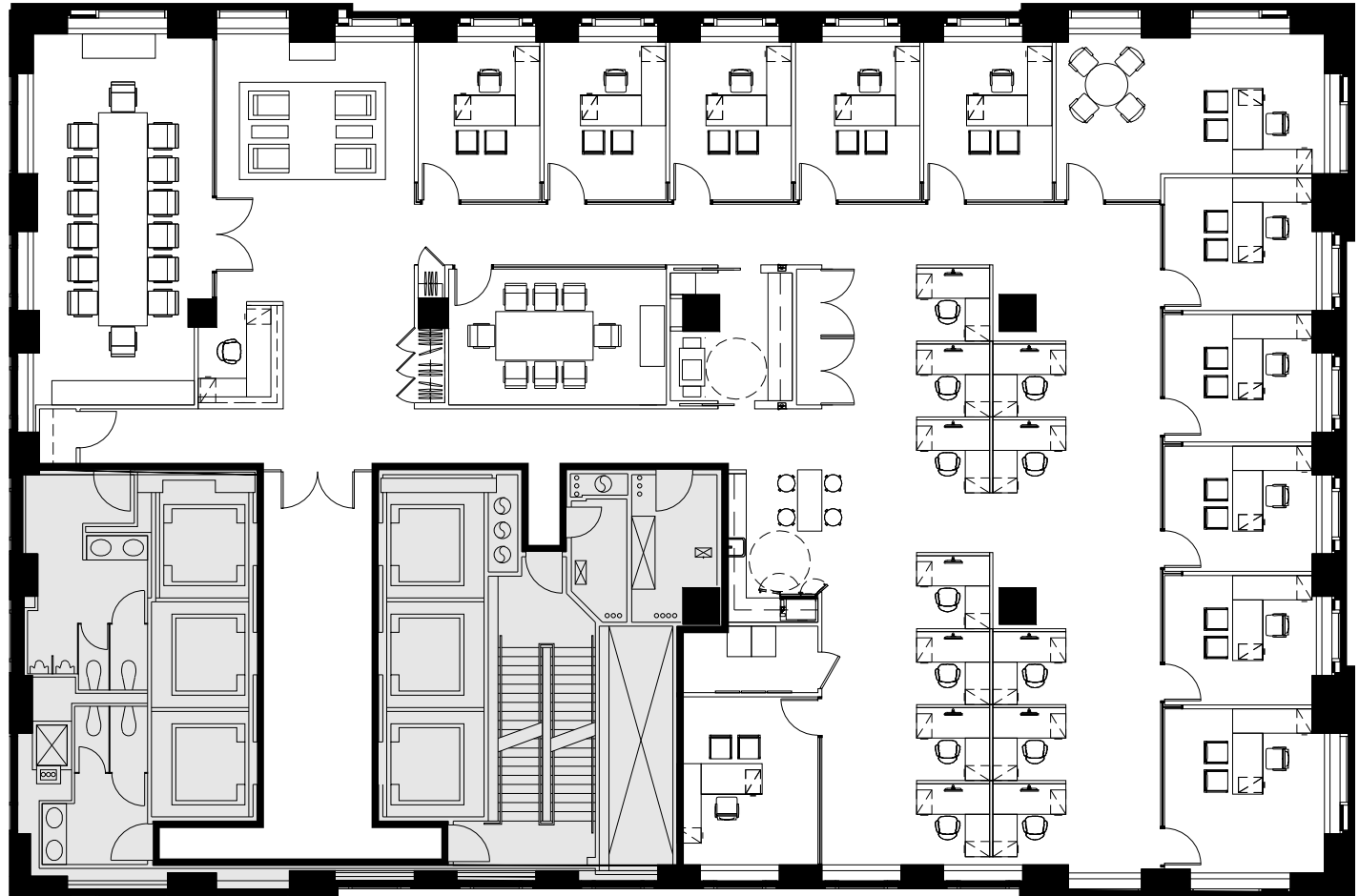
Tower
Open
Plan

+/- 9,800 RSF

Executive Office	1	Meeting Room	1
Private Offices	6	Pantry	1
Reception	1	Phone Room	1
Conference Rooms	2	Copy Room	1

Representative
Full Floor

Tower Office Plan



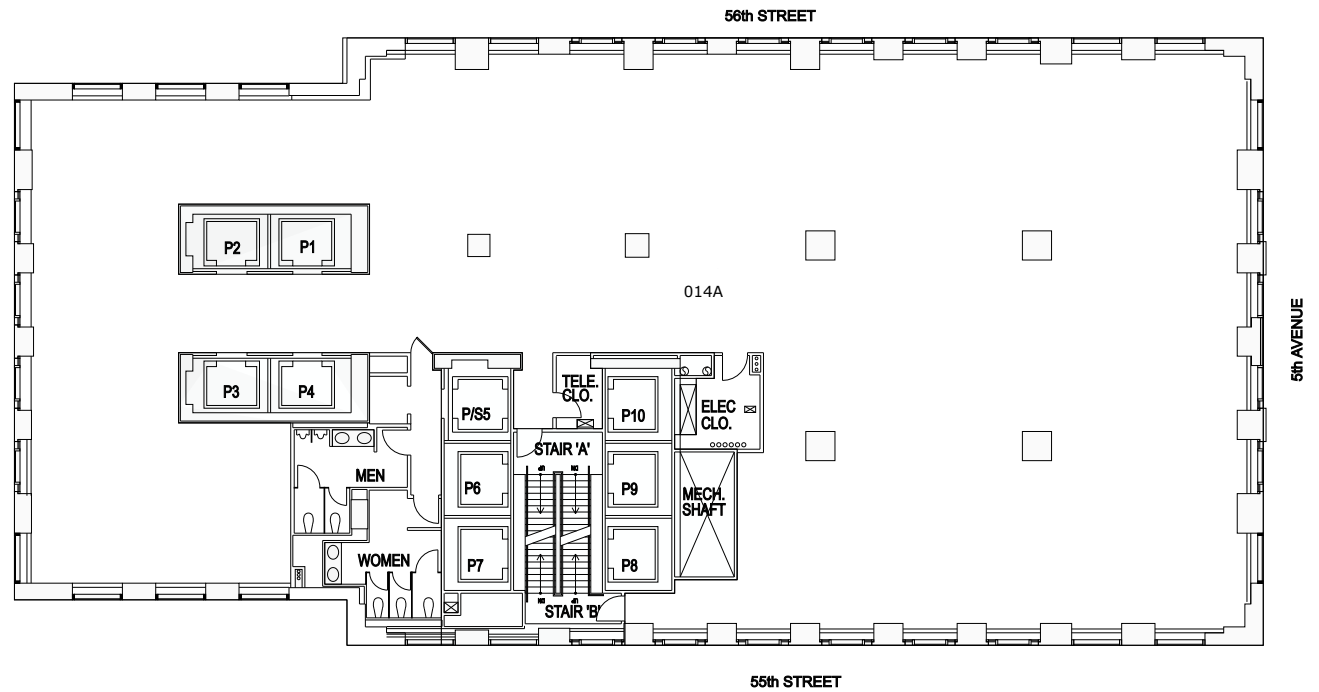
+/- 9,800 RSF

Executive Office	1	Board Room	1	Open Pantry	1
Private Offices	11	Conference Room	1	Copy Area	1
Workstations	12	Cafe	1	Coat Closets	3
Reception	1	IT Room	1		

Representative
Full Floor—

Base Core Plan

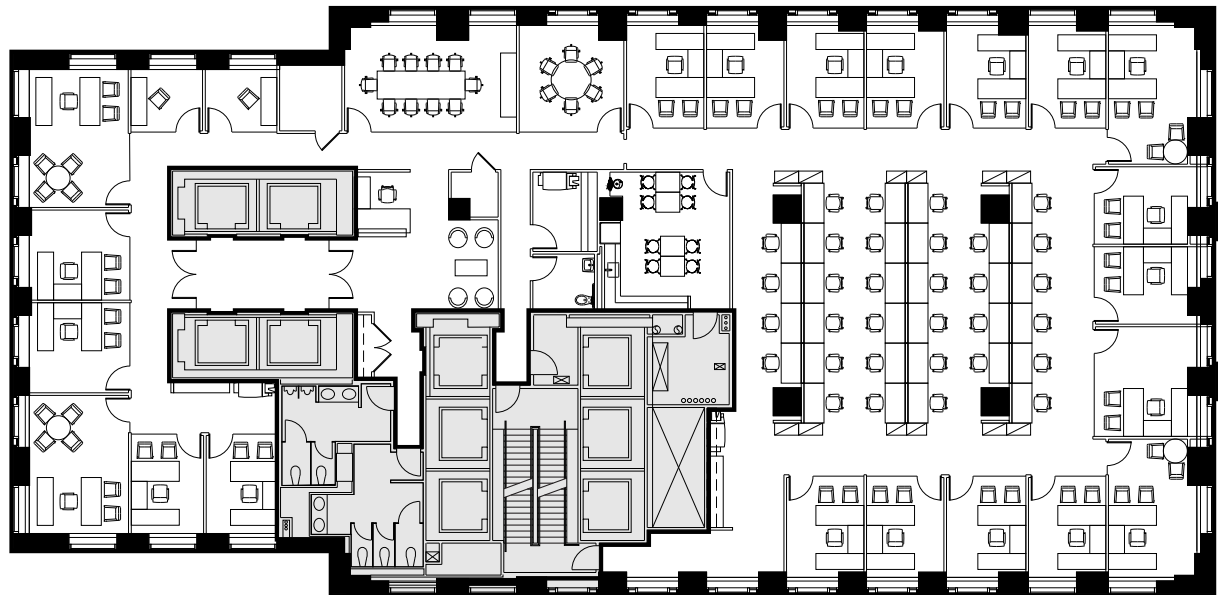
+/- 12,930 RSF



Representative
Full Floor

Base
Office
Plan

+/- 12,930 RSF



Executive Offices	4
Private Offices	17
Workstations	32
Reception	1

Board Room	1
Conference Room	1
IT Room	1
Phone Rooms	2

Open Pantry	1
Copy Areas	3
Coat Closet	1
Storage Room	1

The New
Building Standard
has Arrived at
712 Fifth Avenue



Tenant Journey

Rendering | Pre-Built Suites



Inviting Arrival



Established Presence



Collaborative Meeting Space



Rendering | Pre-Built Suites

Executive Office



Rendering | Pre-Built Suites

Hospitality Infused

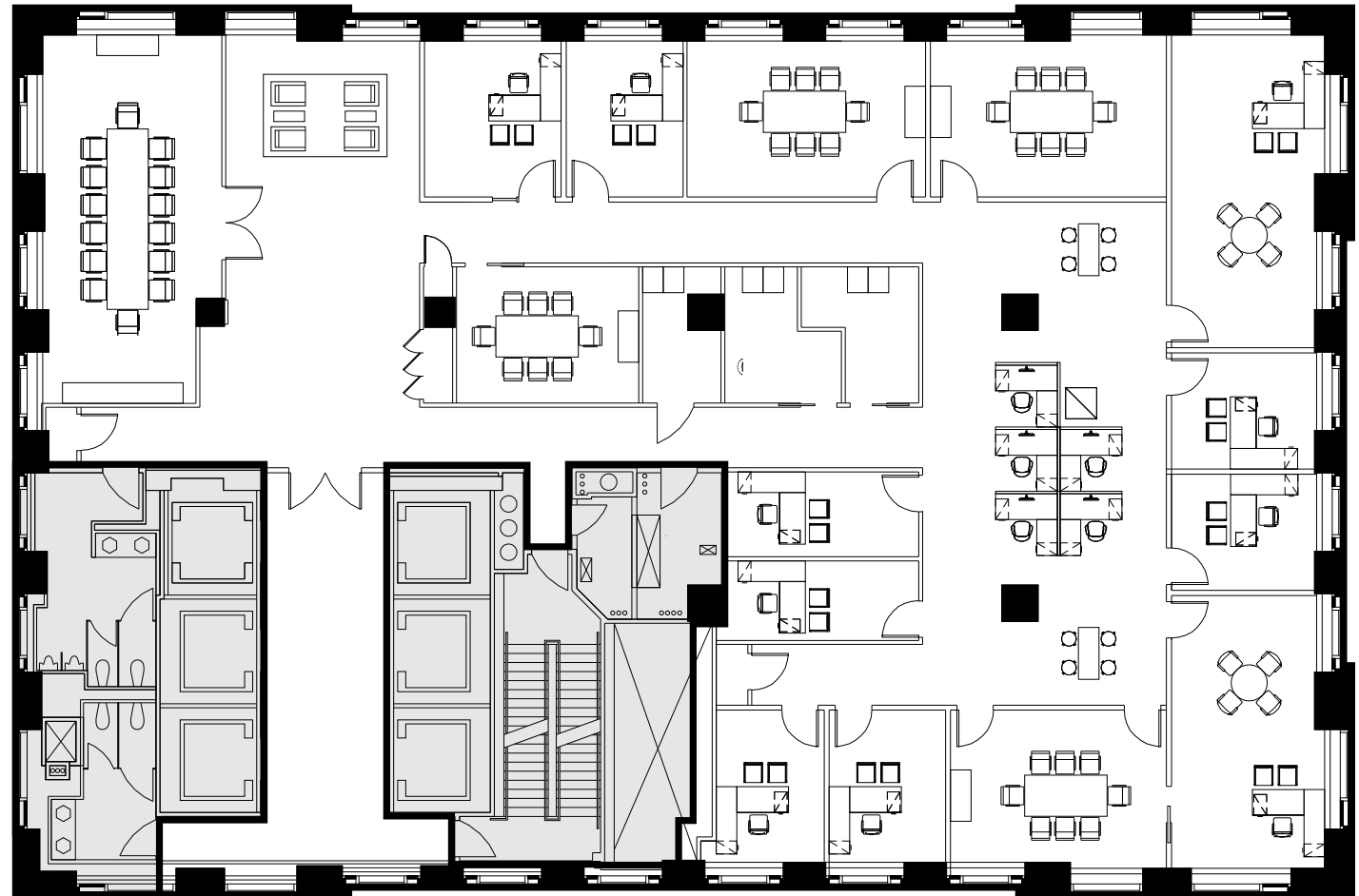


Test Fit

Private Offices	7	Phone Room	1
Workstations	32	Cafe	1
Conference Room	2	Wellness	1
Meeting Room	1	Copy	1

Powerfully
Intimate
Floor Plates.

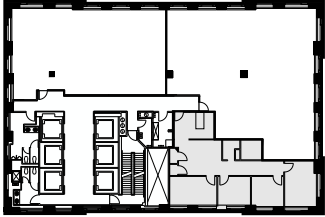
Full Floor Plan
(As Built)



46th
Floor

9,866 RSF

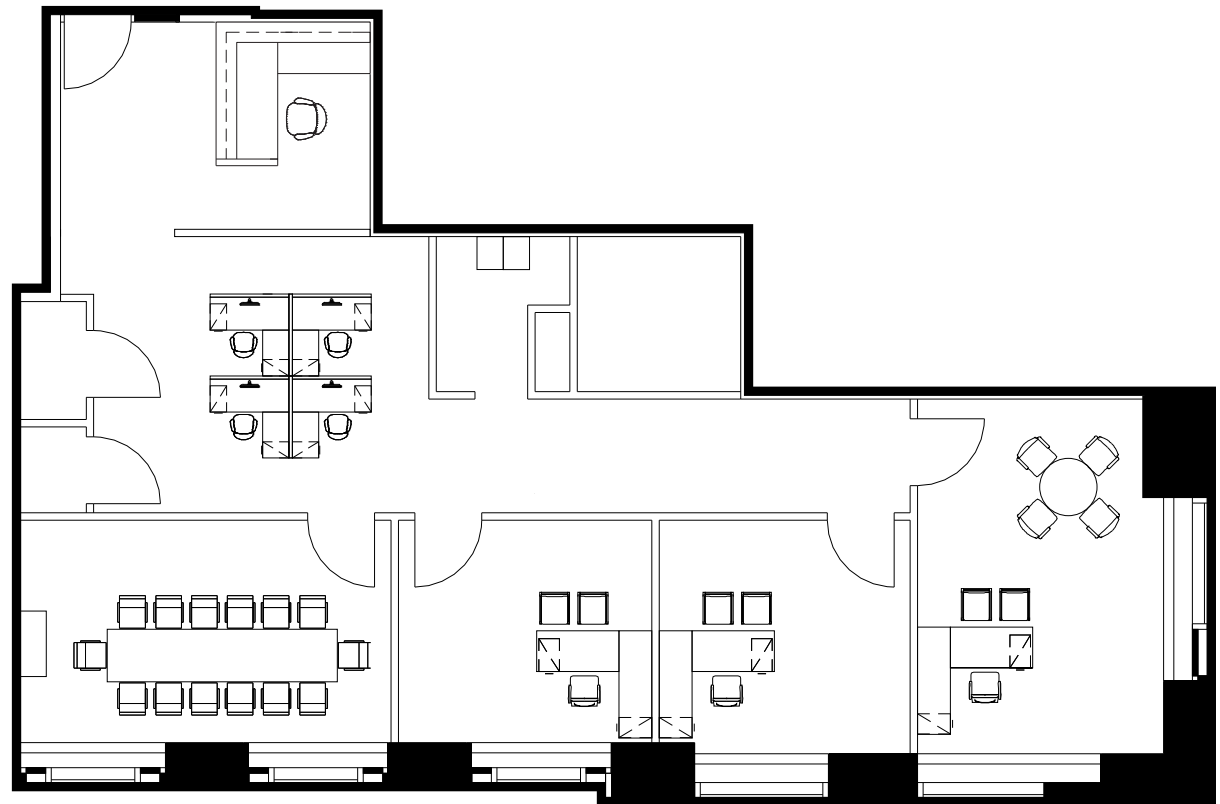
Key Plan



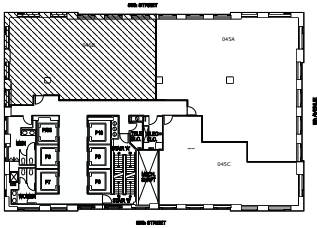
Partial Floor Plan (As Built)

45th Floor

2,306 RSF



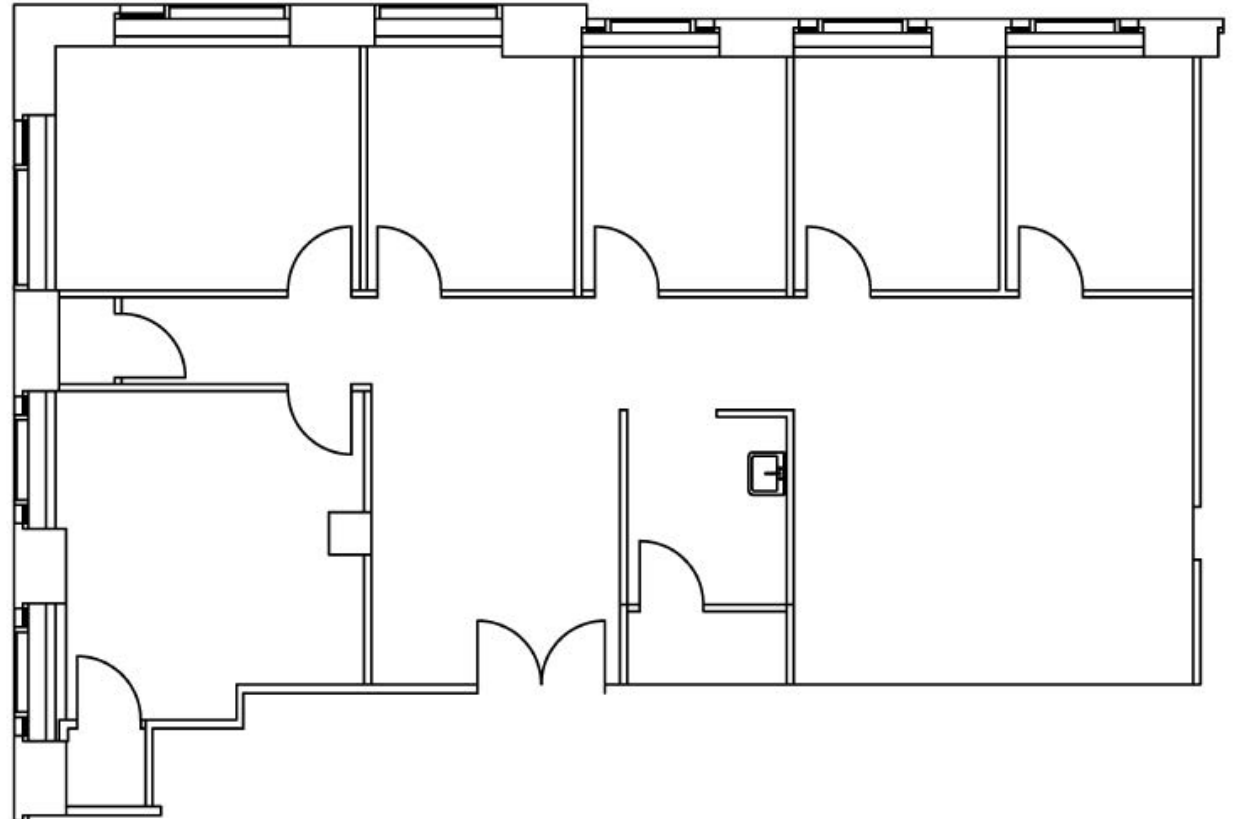
Key Plan



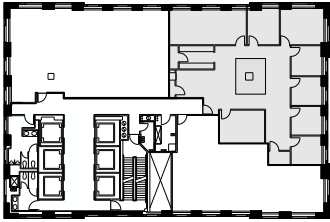
Partial Floor Plan
(As Built)

45th Floor

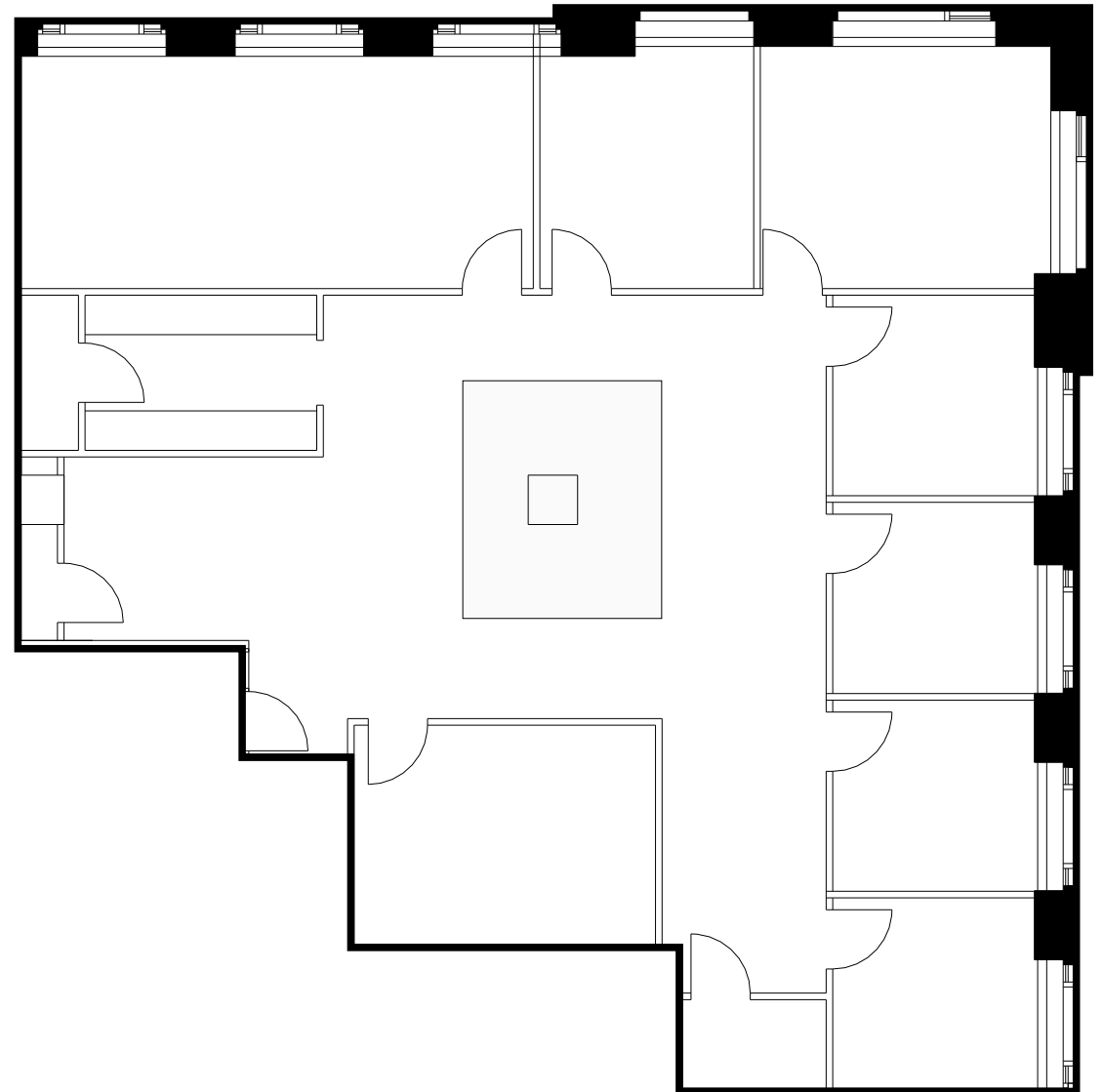
3,160 RSF



Key Plan



Partial Floor Plan
(As Built)



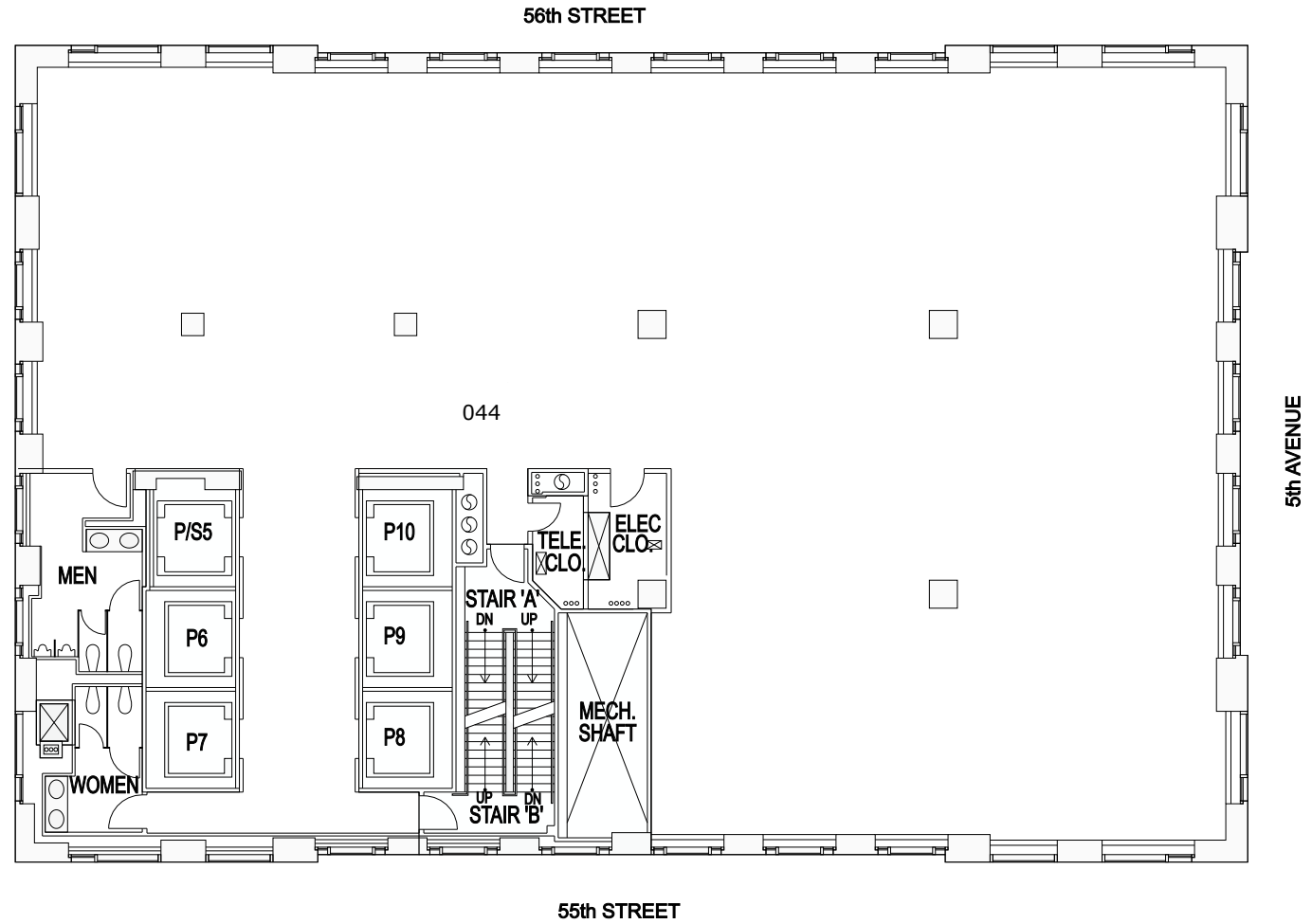
45th
Floor

4,315 RSF

Full Floor Plan (Core Plan)

44th Floor

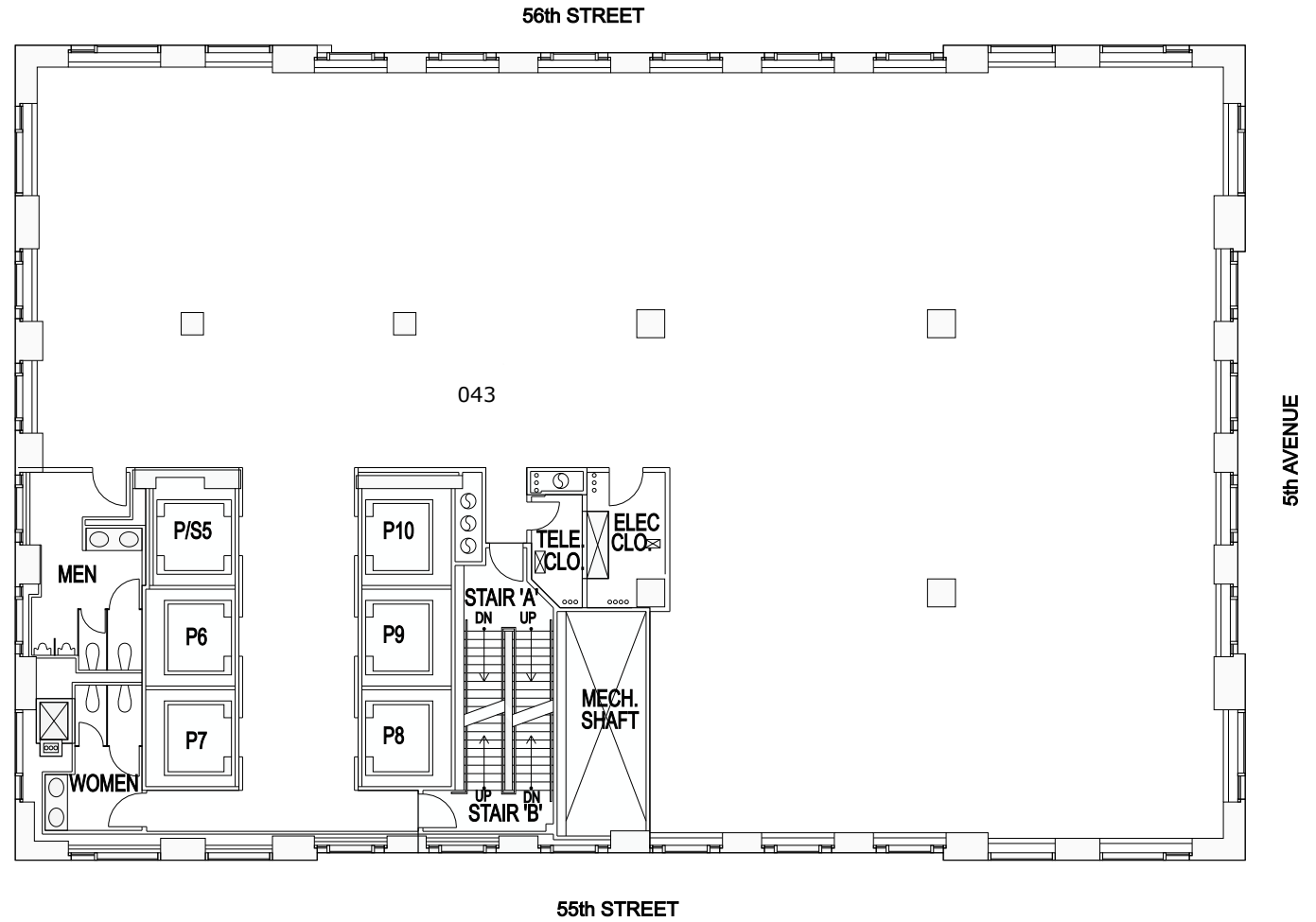
9,724 RSF



Full Floor Plan (Core Plan)

43rd Floor

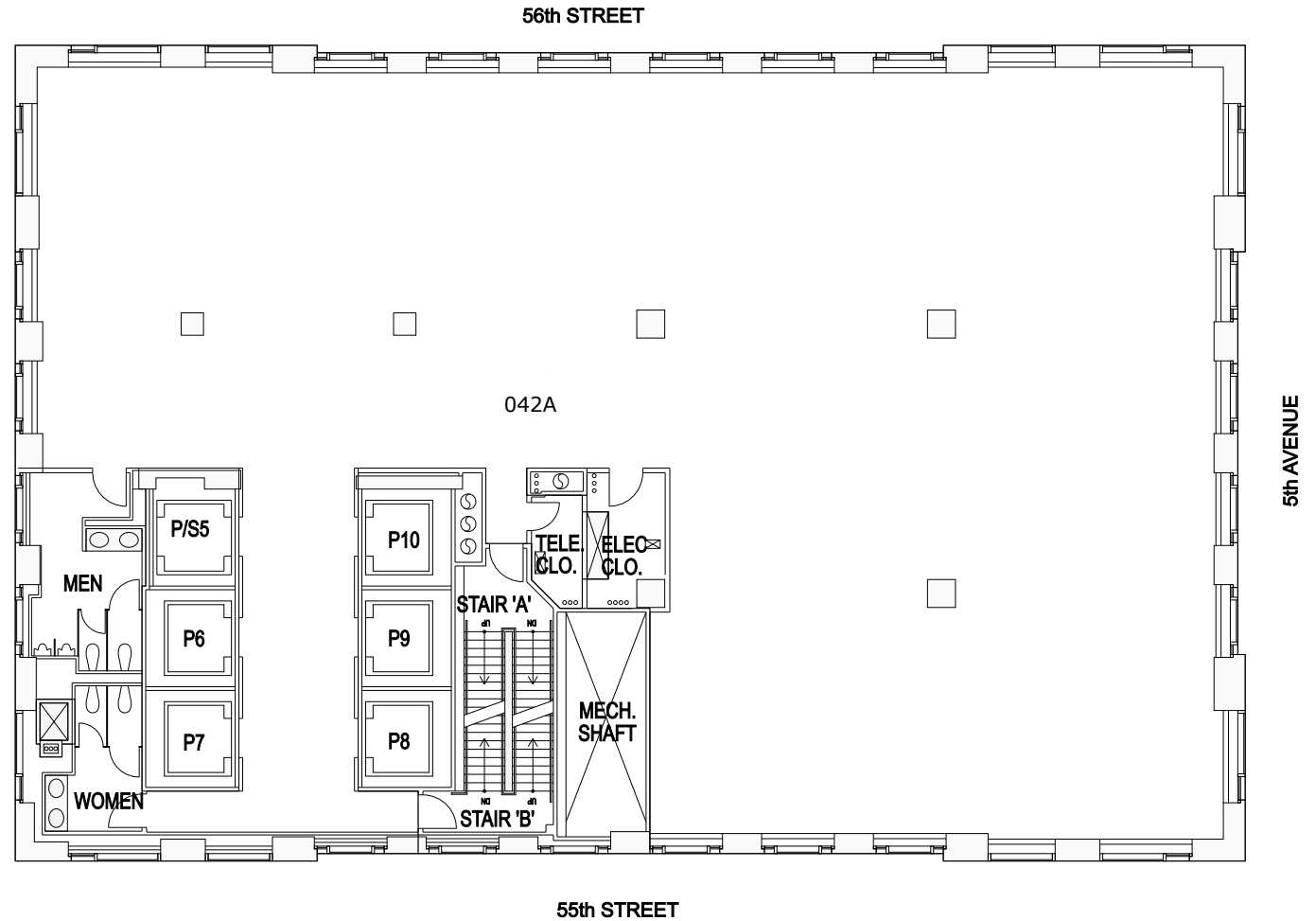
9,724 RSF



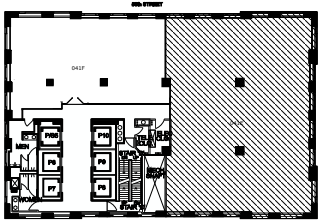
Full Floor Plan (Core Plan)

42nd Floor

9,777 RSF



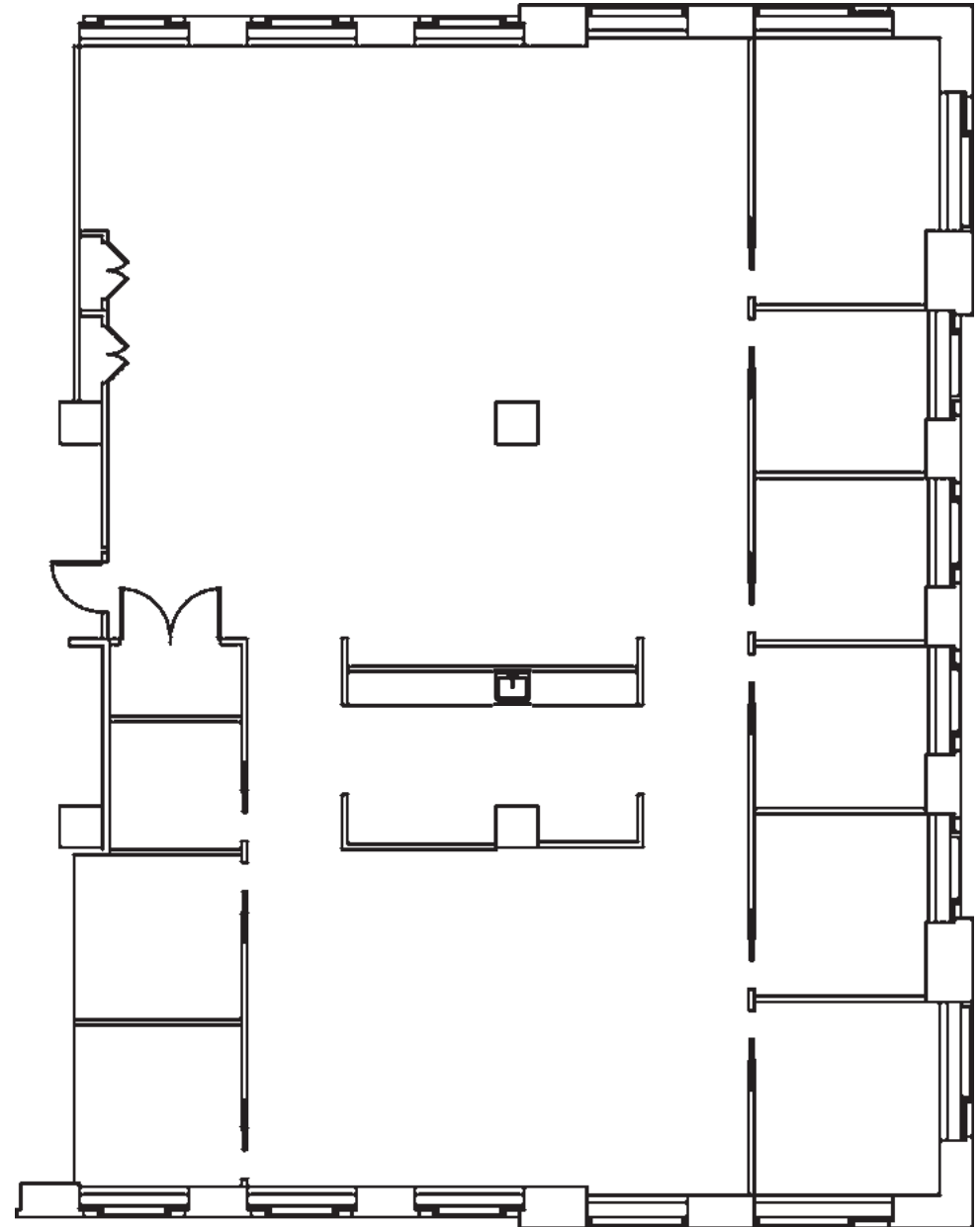
Key Plan



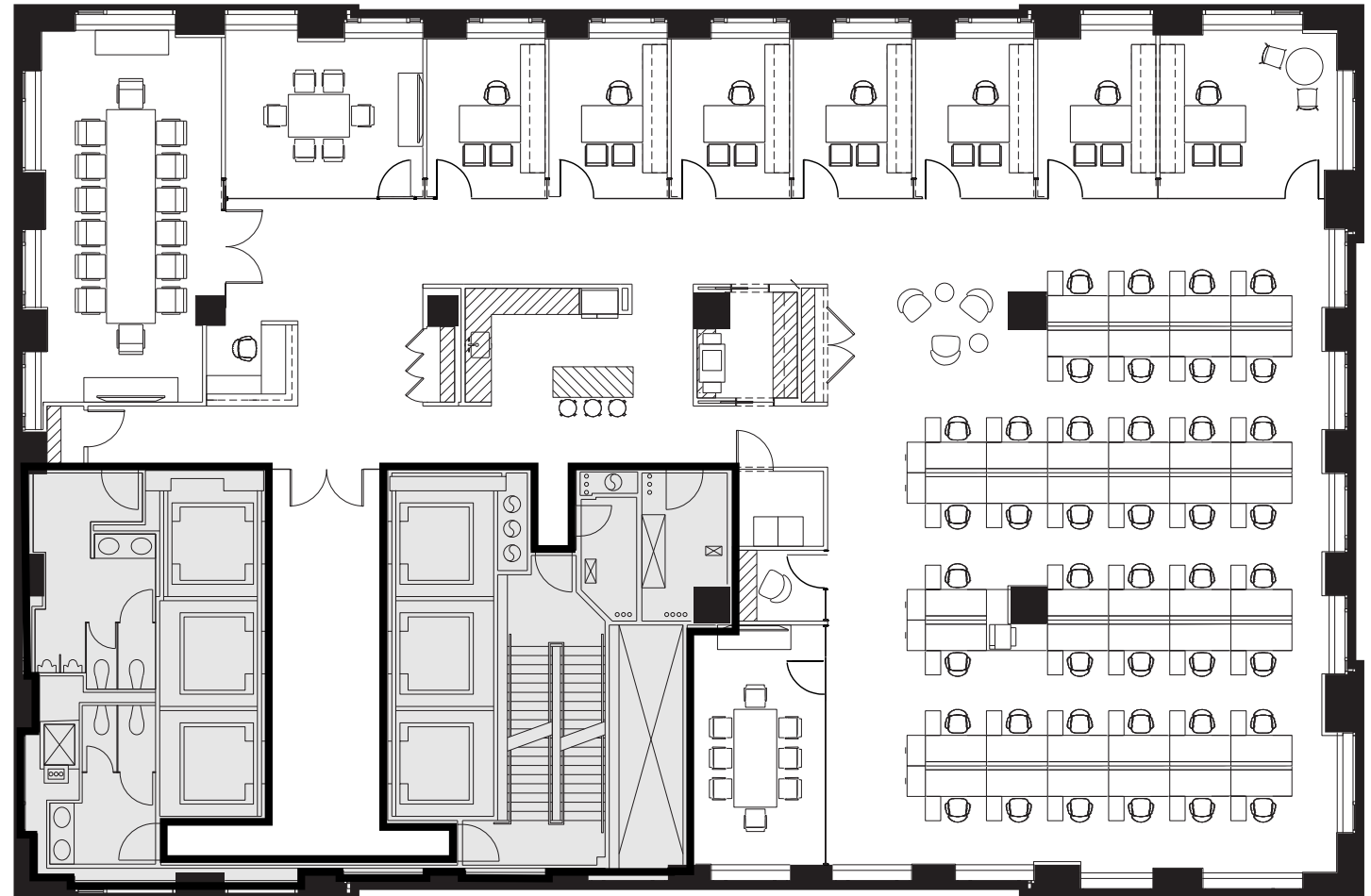
Partial Floor Plan
(As Built)

41st Floor

6,515 RSF



Full Floor Plan (Prebuilt)

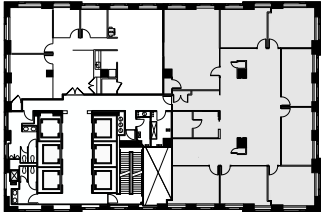


24th Floor

9,734 RSF

Executive Office	1	Meeting Room	1
Private Offices	6	Pantry	1
Reception	1	Phone Room	1
Conference Rooms	2	Copy Room	1

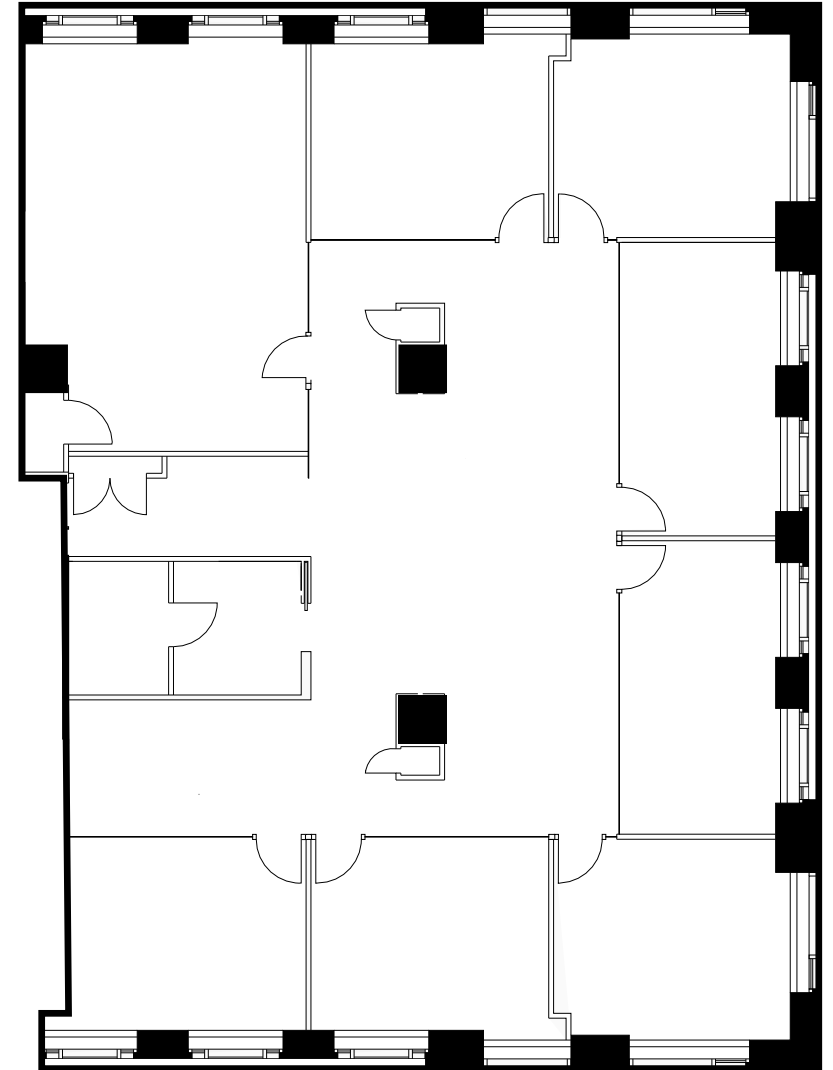
Key Plan



Partial Floor Plan (As Built)

21st Floor

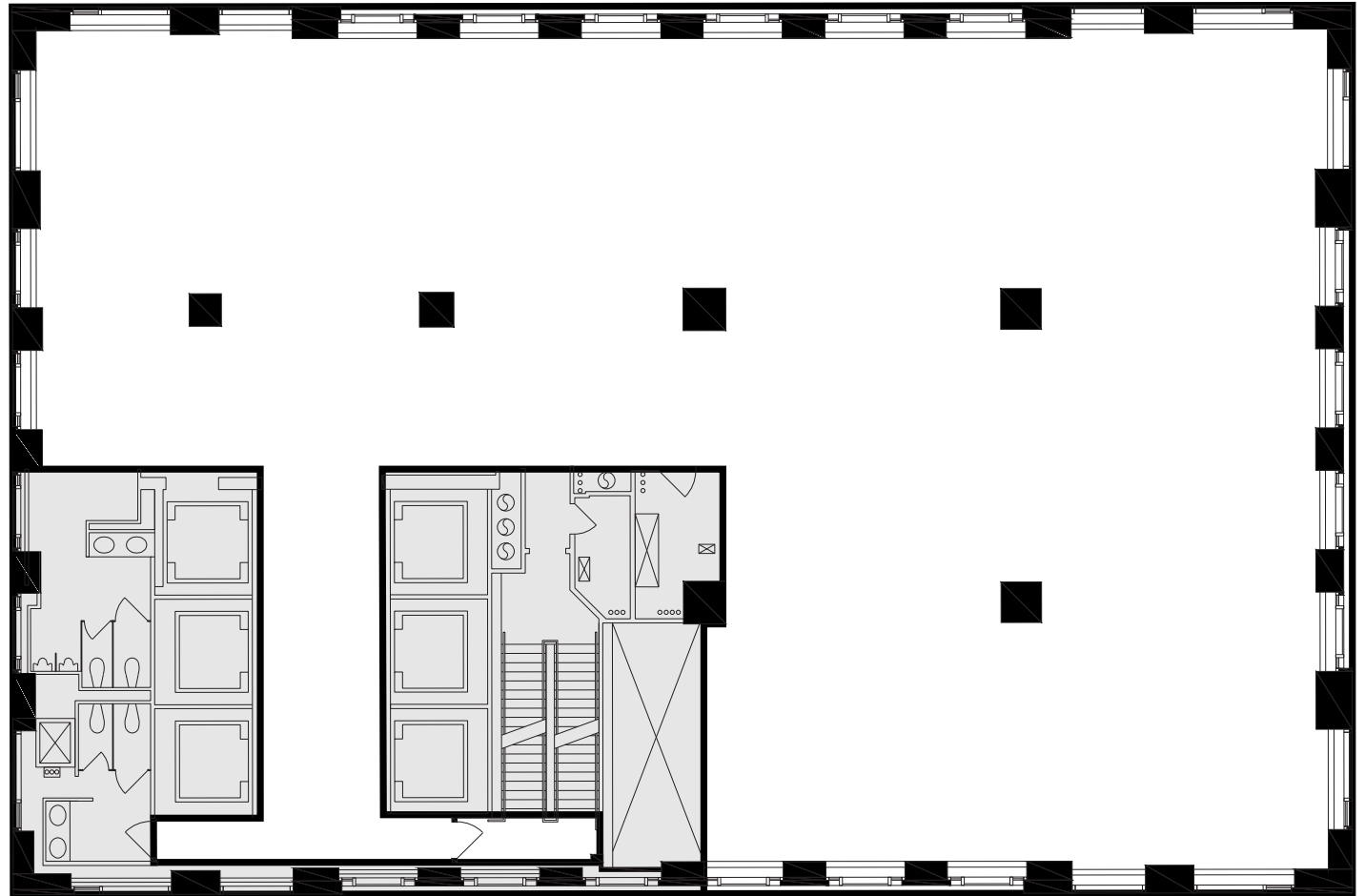
6,545 RSF



Full Floor
(Core Plan)

20th
Floor

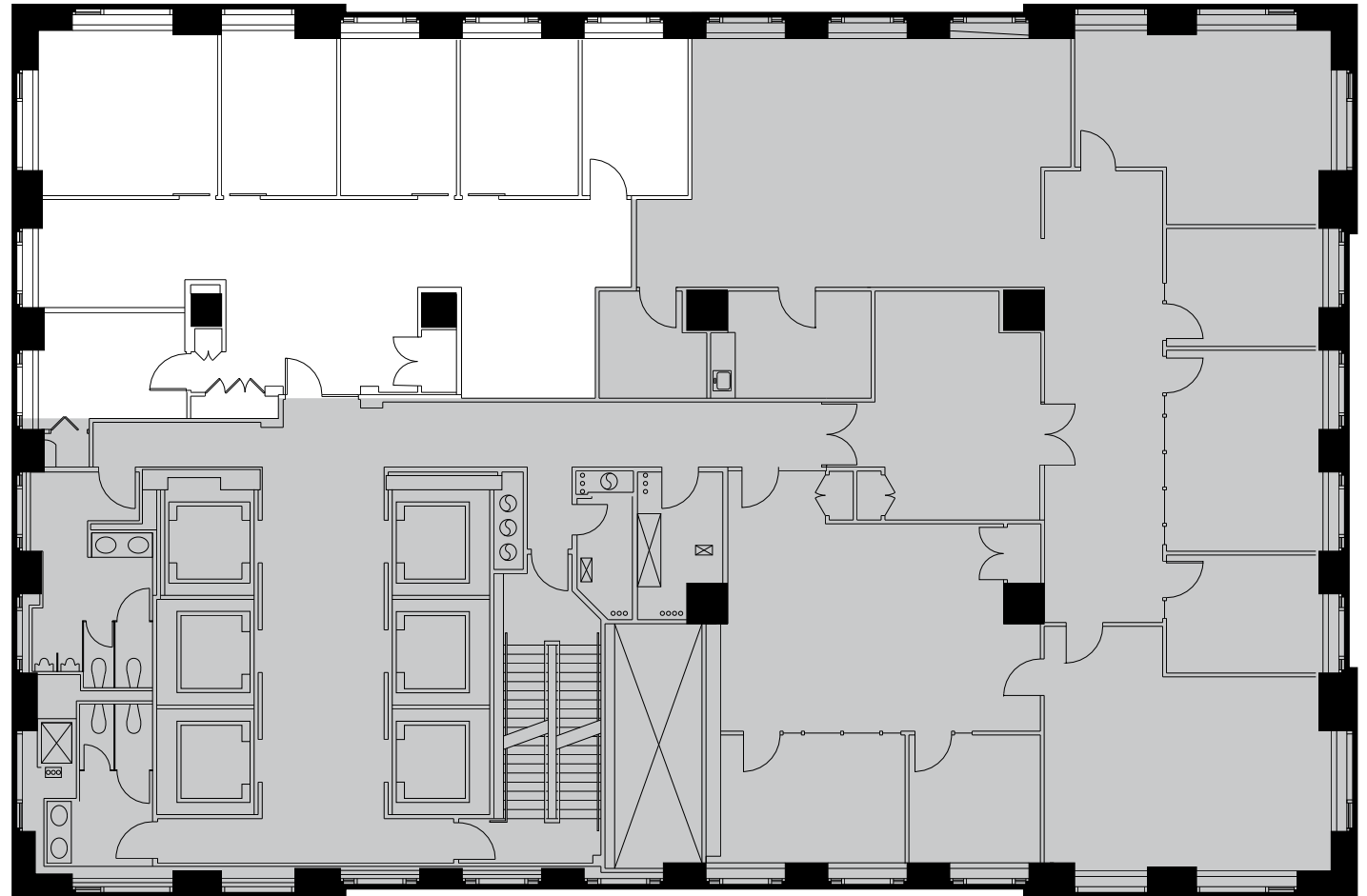
9,697 RSF



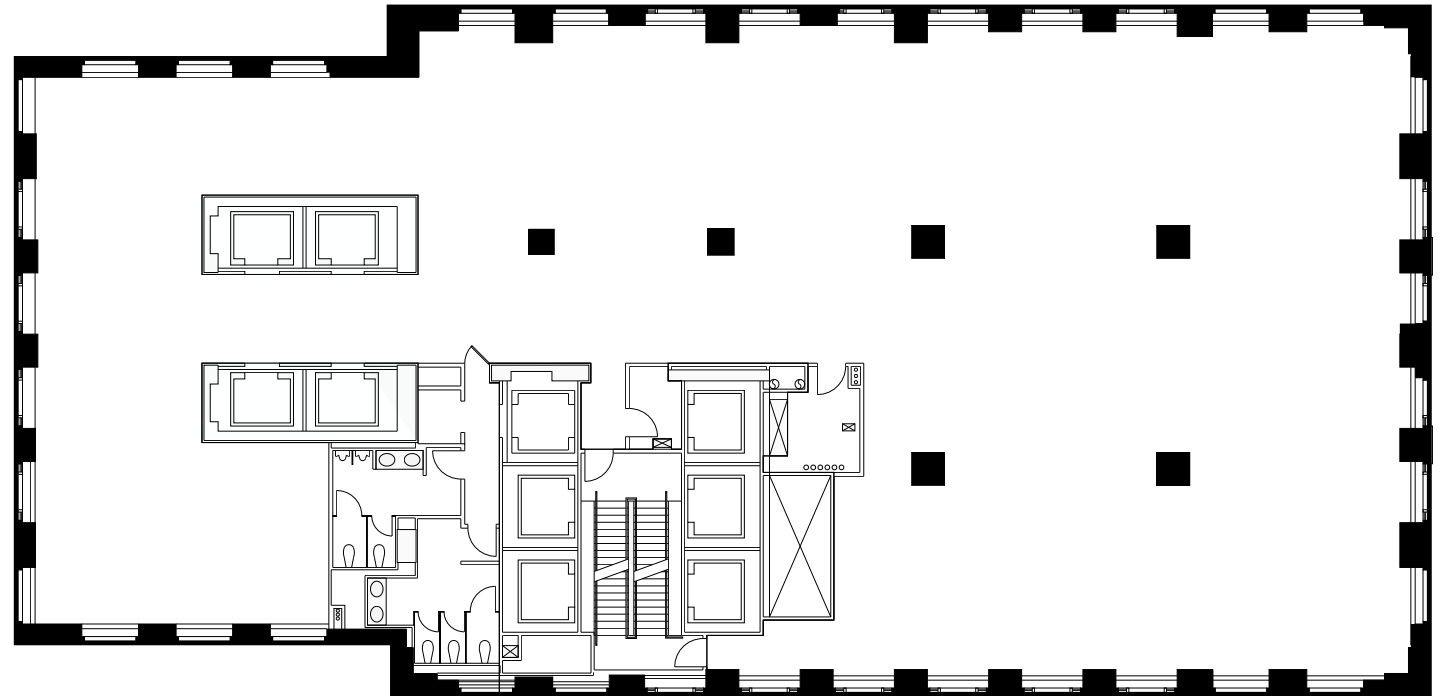
Partial Floor Plan
(As Built)

17th
Floor

2,959 RSF



Full Floor
(Core Plan)



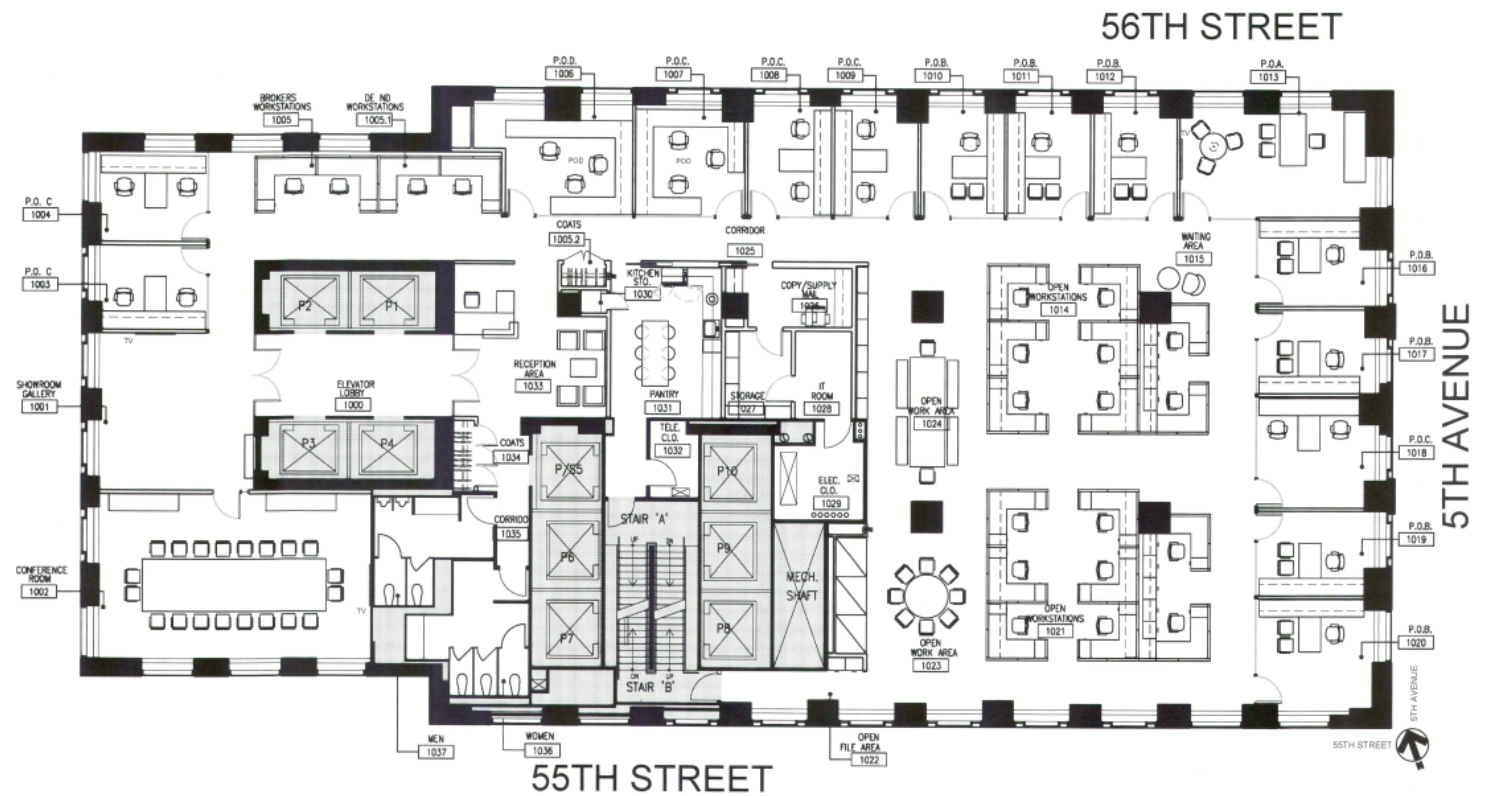
14th
Floor

12,930 RSF

Full Floor Plan (As Built)

10th Floor

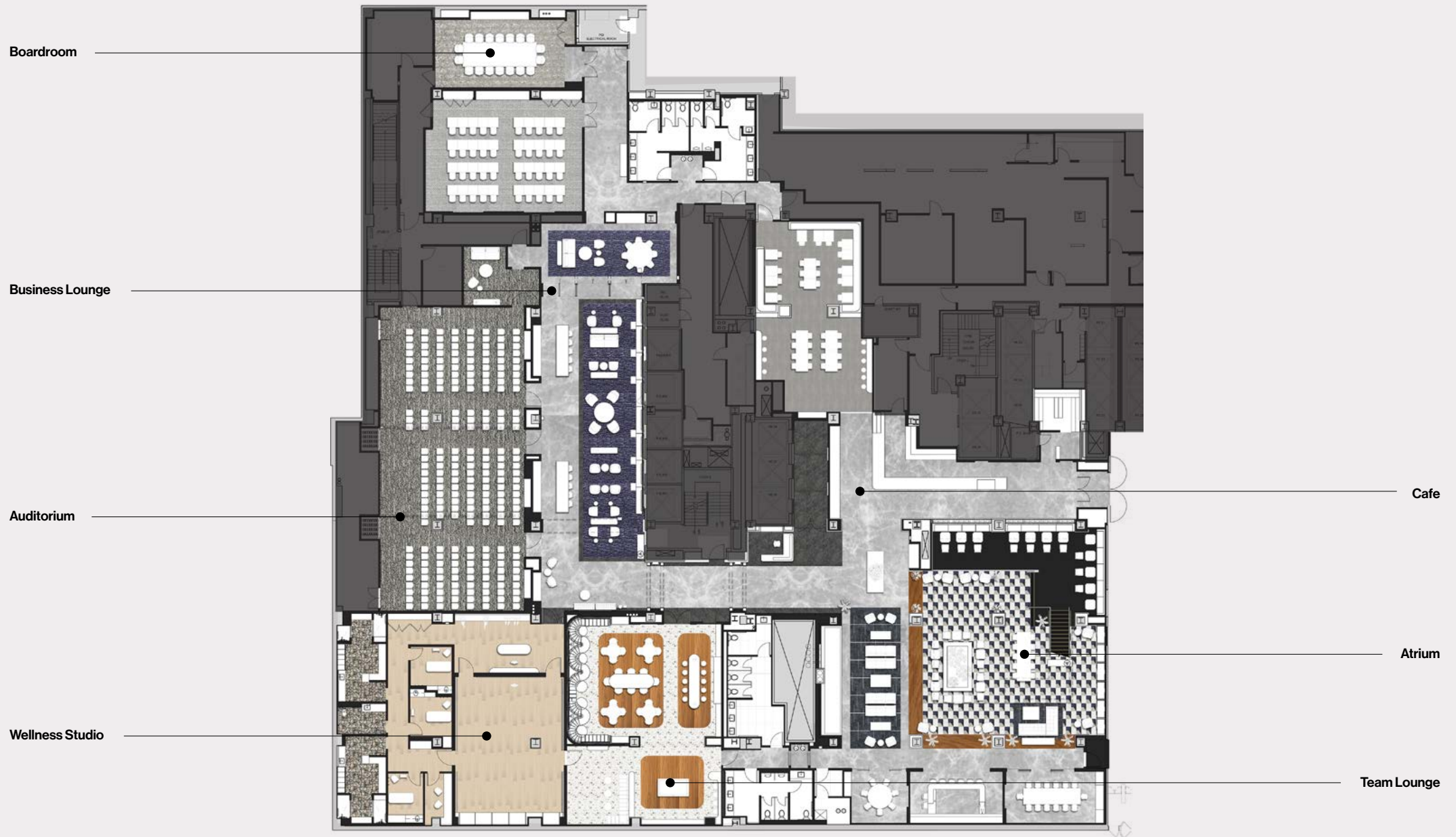
12,930 RSF



Paramount Club

The new large-scale conference and amenity center at 1301 Avenue of the Americas is available exclusively to tenants within Paramount's New York portfolio.

Concourse Level Amenity Space





Street Level Entrance to Amenity Center

1301 Avenue of the Americas



Concourse Level Atrium

1301 Avenue of the Americas



In-Building Cafe

1301 Avenue of the Americas



Team Lounge

1301 Avenue of the Americas



Boardroom



Business Lounge



PARAMOUNT
WELLNESS

Wellness Studio

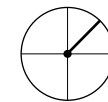
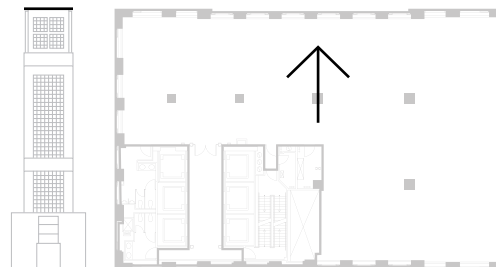
1301 Avenue of the Americas



Auditorium

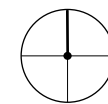
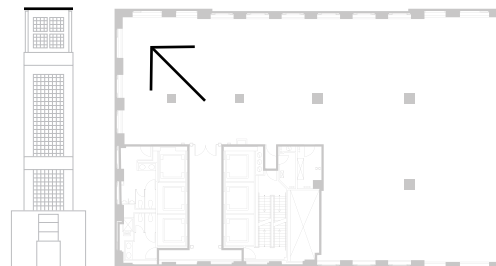
1301 Avenue of the Americas

World-class Point of View.



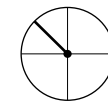
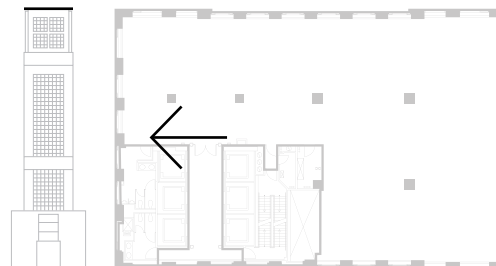
North East

Take in the stunning expanse of Central Park, cut perfectly against 5th Avenue's steadfast wall of classic architecture.



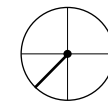
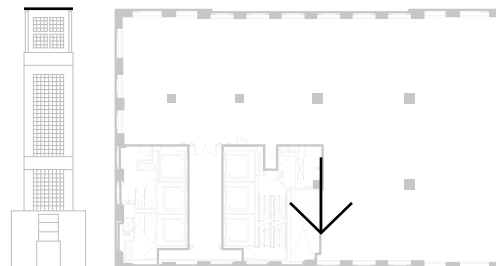
North

Contemplative scenes where the verdant meets vaulting high rises, and the reflection of the sky peers into the Hudson River.



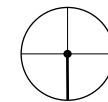
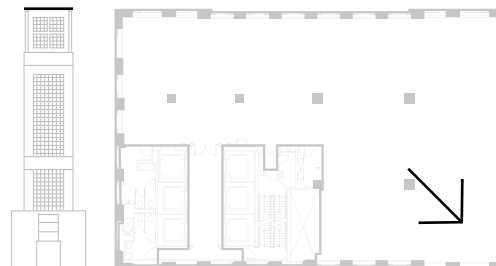
North West

At such great heights, glinting glass and steel are success's most constant companion.



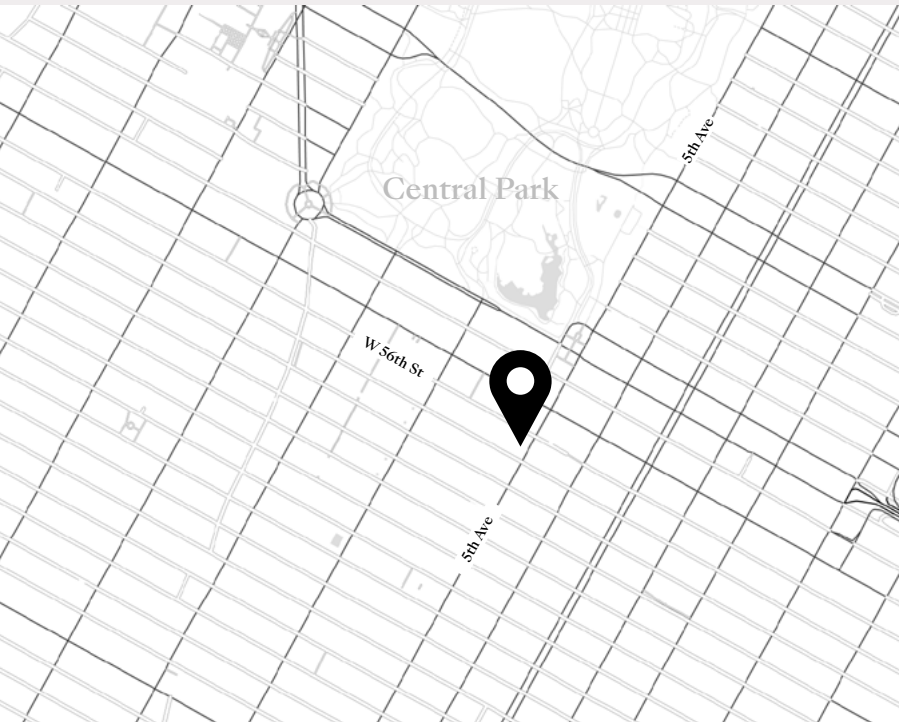
South West

Few things feel out of reach with the world's most iconic skyline at your back.



South

Landmarks as far as the eye can see, complete with hints of the East River; one of the many perks of being at the center of it all.



The World-renowned Plaza District.

An Incomparable Address

Manhattan's Plaza District is not only home to the city's most iconic buildings, it's also the largest commercial, media and entertainment center on the globe. Steeped in history and worldwide fame, everything from its shops on 5th Avenue to Central Park is quintessential New York.



Pause for reflection amid the stunningly surreal heartbeat of the city.



Fifth Avenue, home to over a century of the world's best beloved fashion.

Leisure, Illuminated.

Culture & Shopping

Peruse the shops of 5th Avenue, where the world's most famed fashion has made its home for over a century. Take in one of the 250 performances annually at Carnegie Hall, showcasing music—classical and current—since 1891. Visit the AI Hirschfield Theater for a Broadway musical, or spark inspiration at the Museum of Modern Art. It's all here, constantly evolving, reinventing itself for the next generation to come—and it's all at the doorstep of 712 5th Avenue.



A mecca for music, classical and new, for over 125 years.



The Museum of Modern Art, hosting nearly 3,000,000 visitors each year.



Meetings and more at a red-carpeted symbol of New York luxury.

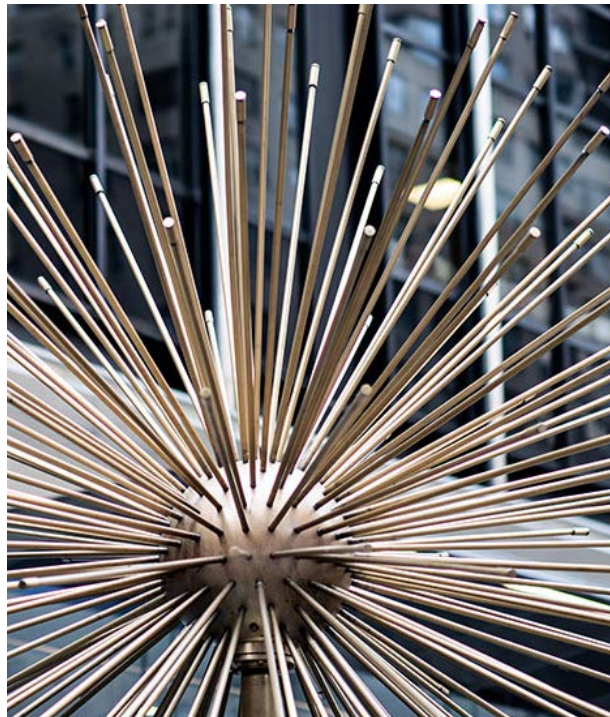


The Plaza District, an exceptional place to call home.

The Luxury of Connection.

Convenience & Access

Steps from Central Park and extraordinarily connected to public transit, 712 5th Avenue's location is its luxury. And once there, a vibrant neighborhood can be found at one's fingertips. Follow in Ernest Hemingway's footsteps with a dry martini at Club 21, or meet friends at the red-carpeted St. Regis. Past and present collide at every turn, whether it's inside the Apple Store's glass cube or on the tennis courts of the historic University Club.



Eclectic energy resonates throughout the world's largest business district.



Deals happen fireside at the Polo Bar.



The Plaza Hotel, a plush meeting spot since 1907.



Steeped in history. Seeking what's next.

Storied & Spectacular.

Iconic Plaza District

Whether it's a morning run over the serene Gapstow Bridge in the park or meeting clients at the landmark Plaza Hotel, every moment spent in this notable neighborhood feels imbued with sublime New York cache—because it is. Time and intrigue have lent an undeniably captivating quality to every Midtown icon within reach, from the Pulitzer Fountain to Columbus Circle and beyond.



The Museum of Natural History as seen from Cherry Fountain.



The Bethesda Terrace Fountain, featuring the Angel of the Waters.



Master Midtown.

Culture & Shopping

- | | |
|-------------------------|---------------------|
| 1 Al Hirschfeld Theatre | 5 Bloomingdale's |
| 2 Carnegie Hall | 6 Bergdorf Goodman |
| 3 MoMA | 7 Saks Fifth Avenue |
| 4 Chanel | 8 Tiffany & Co |

Convenience & Access

- | | |
|--------------------------|------------------------|
| 9 The St. Regis New York | 13 Equinox Rockefeller |
| 10 21 Club | 14 Apple Fifth Avenue |
| 11 The Polo Bar | 15 One 57 |
| 12 University Club | 16 53 West 53 |

Storied & Spectacular

- | | |
|-------------------------|------------------------------|
| 17 Gapstow Bridge | 21 Tecumseh Statue |
| 18 Belvedere Castle | 22 Pulitzer Fountain |
| 19 Cherry Hill Fountain | 23 Columbus Circle |
| 20 The Plaza | 24 Museum of Natural History |

Fortune
Favors
the Bold.

Leasing Information



Peter Brindley
Executive Vice President, Head of Real Estate
212 237 3156
pbrindley@pgre.com

Douglas Neye
Senior Vice President
212 237 2976
dneye@pgre.com

Sean Kirk
Vice President
212 237 3168
skirk@pgre.com

NEWMARK

David Falk
President, New York Tri-State Region
212-372-2271
david.falk@nmrk.com

Peter Shimkin
Vice Chairman
212-372-2150
peter.shimkin@nmrk.com

Jason Greenstein
Executive Managing Director
212-372-2349
jason.greenstein@nmrk.com

Matthew Leon
Executive Managing Director
212-372-2041
matt.leon@nmrk.com

Paige Raisides
Associate
212-665-1227
paige.raisides@nmrk.com

Paramount Group, Inc.

Paramount Group, Inc. is a real estate investment and management firm with in-house expertise in asset management, property management, leasing, acquisition, repositioning, redevelopment and financing. Established in 1978 by Werner Otto, Paramount is one of the largest publicly-owned real estate companies headquartered in New York City. Over several decades and numerous market cycles, Paramount has provided first class properties, services and amenities to its tenants. Albert Behler, President and CEO, has led Paramount since 1991 and, along with a seasoned, committed and proven management team, has assembled the company's current 13.9 million-square-foot portfolio of high quality, Class A office building investments, a retail property, as well as debt and equity investments in New York and San Francisco.

Newmark

Newmark Group, Inc. (Nasdaq: NMRK), together with its subsidiaries ("Newmark"), is a leading advisor and service provider to large institutional investors, global corporations and other owners and occupiers of commercial real estate. We offer a diverse array of integrated services and products designed to meet the full needs of our clients.

Founded in 1929 and headquartered in New York City, Newmark is a top commercial real estate services platform with a rapidly expanding international footprint. We have relationships with many of the world's largest commercial property owners, real estate developers and investors, as well as Fortune 500 and Forbes Global 2000 companies. Over the past decade, Newmark has been one of the fastest growing commercial real estate firms in the industry, increasing our total revenues by more than 1,000% between 2011 and 2022.

Seven
Twelve
Fifth
Avenue

SevenTwelveFifth.com