

900 THIRD AVE

NORTHWEST CORNER OF EAST 54TH STREET

Midtown Corner Retail at the Base of a 600,000 Sf Class-A Office Tower





900 THIRD AVE

Spectacular,
7,100 SF
Midtown Corner
Retail Opportunity

Subject Space

- Former Bank of America
- Northwest Corner of East 54th Street

Space Specs

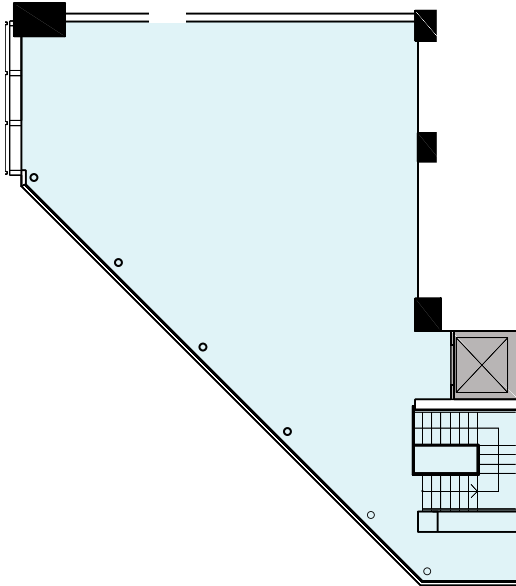
- Mezzanine 1,724 SF
- Ground Floor 3,658 SF
- Lower Level 1,723 SF
- **Total 7,105 SF**

Highlights

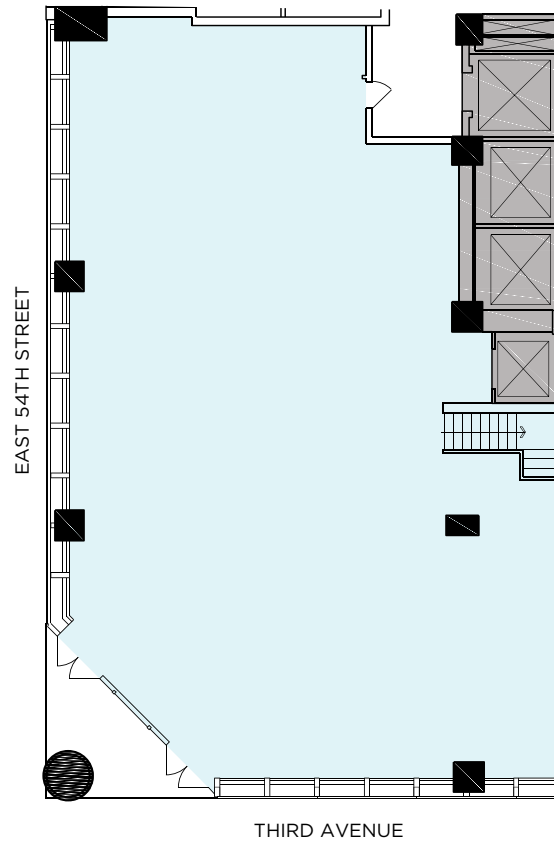
- Prime corner retail availability at the base of 900 Third Avenue, a Class-A office tower in the heart of Midtown East
- Seeking Food & Beverage, Personal Services, Banks, Home Décor, and most other upscale amenity uses
- All-glass frontage adjacent to the building lobby on the corner of Third Avenue & East 54th Street
- Lower Level and Mezzanine areas available for storage
- Venting possible and gas service has been recently brought to the building



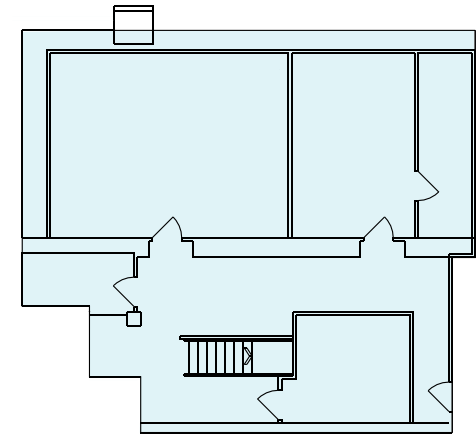
MEZZANINE **1,724 SF**



GROUND FLOOR **3,658 SF**
20' CEILING



LOWER LEVEL **1,723 SF**



900 THIRD AVE

www.900Third.com

FOR LEASING INFORMATION, PLEASE CONTACT:

ALAN SCHMERZLER | 212 841 5930
ALAN.SCHMERZLER@CUSHWAKE.COM

STEVEN SOUTENDIJK | 212 713 6845
STEVEN.SOUTENDIJK@CUSHWAKE.COM

SEAN MORAN | 212 841 7668
SEAN.MORAN@CUSHWAKE.COM

PATRICK O'ROURKE | 212 660 7777
PATRICK.O'ROURKE@CUSHWAKE.COM

CATHERINE MERCK | 212 698 2621
CATHERINE.MERCK@CUSHWAKE.COM



© 2026 CUSHMAN & WAKEFIELD. ALL RIGHTS RESERVED. THE INFORMATION CONTAINED IN THIS COMMUNICATION IS STRICTLY CONFIDENTIAL. THIS INFORMATION HAS BEEN OBTAINED FROM SOURCES BELIEVED TO BE RELIABLE BUT HAS NOT BEEN VERIFIED. NO WARRANTY OR REPRESENTATION, EXPRESS OR IMPLIED, IS MADE AS TO THE CONDITION OF THE PROPERTY (OR PROPERTIES) REFERENCED HEREIN OR AS TO THE ACCURACY OR COMPLETENESS OF THE INFORMATION CONTAINED HEREIN, AND SAME IS SUBMITTED SUBJECT TO ERRORS, OMISSIONS, CHANGE OF PRICE, RENTAL OR OTHER CONDITIONS, WITHDRAWAL WITHOUT NOTICE, AND TO ANY SPECIAL LISTING CONDITIONS IMPOSED BY THE PROPERTY OWNER(S). ANY PROJECTIONS, OPINIONS OR ESTIMATES ARE SUBJECT TO UNCERTAINTY AND DO NOT SIGNIFY CURRENT OR FUTURE PROPERTY PERFORMANCE.